

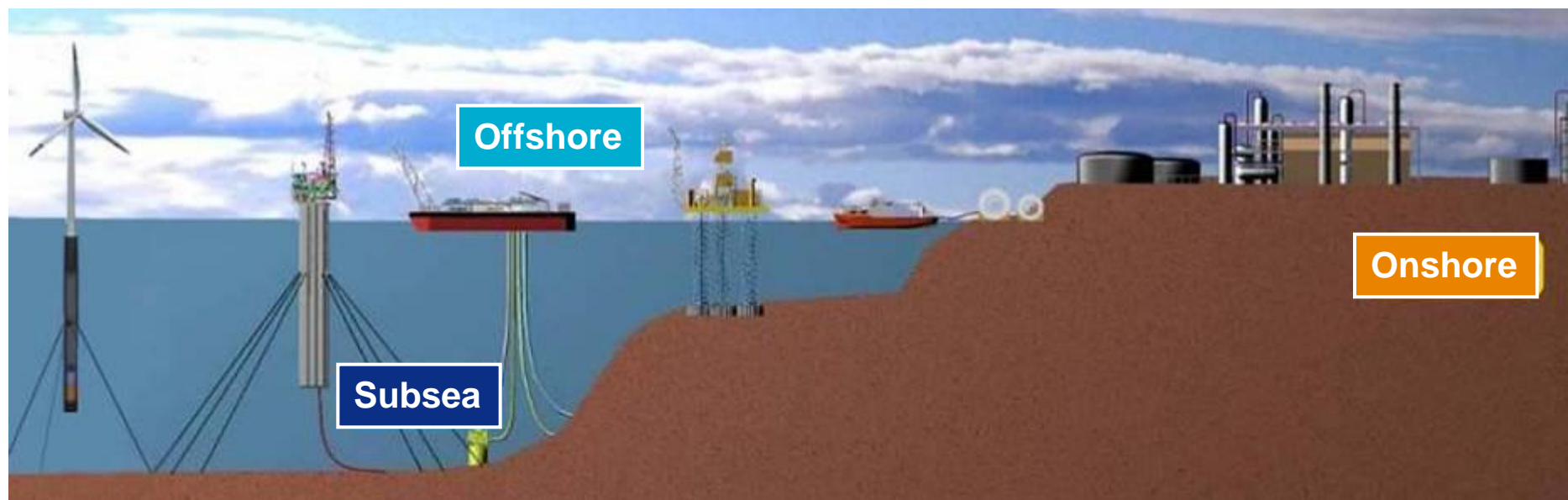
# Taking Safety Further, Together



**Thierry PILENKO** – Chairman and CEO  
2nd IEF NOC-IOC Forum, 7-8 April 2011, Paris, France

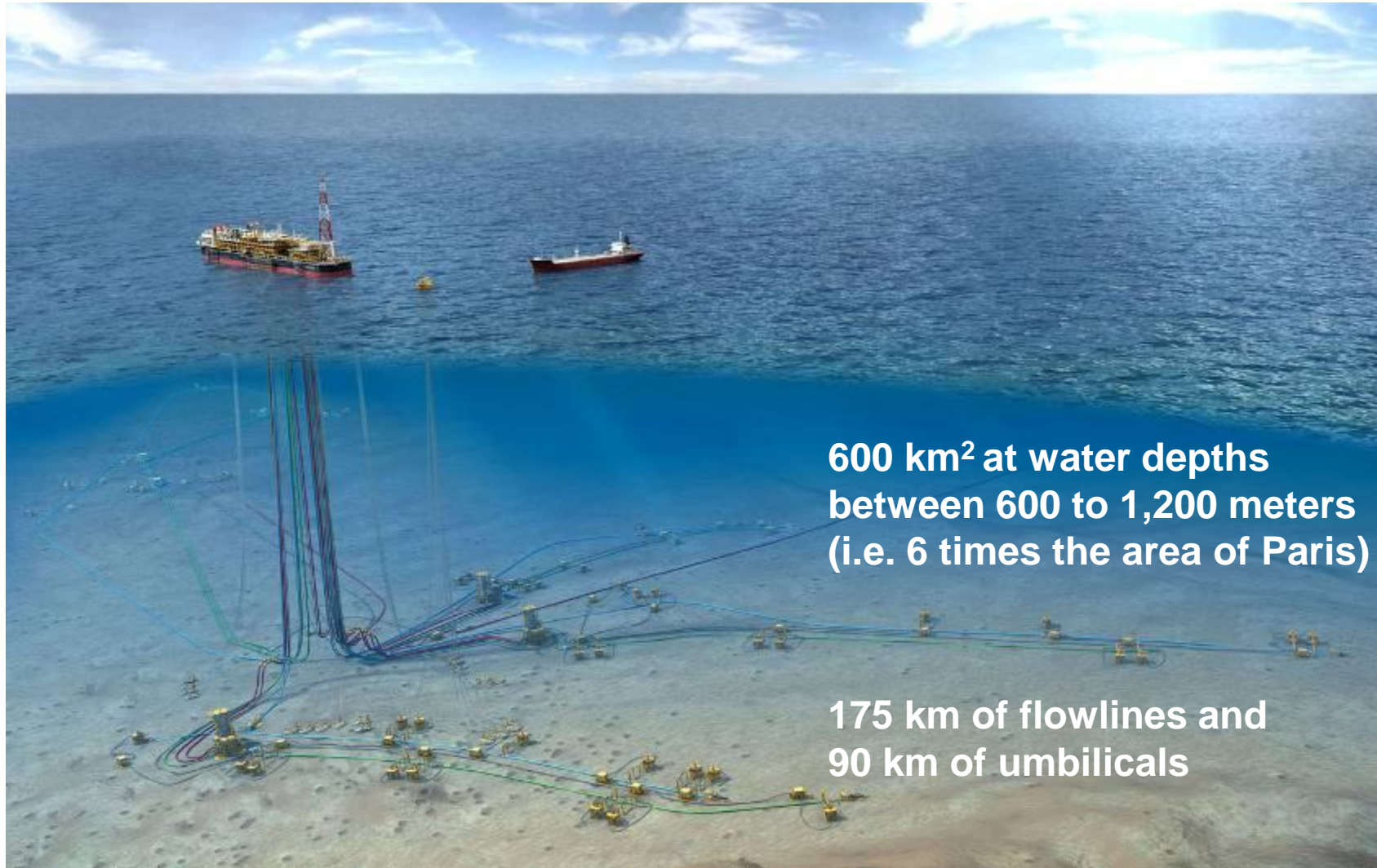
# Our business

- With engineering, technologies and project management, on land and at sea, we safely deliver the best solutions for our clients
- A regular workforce of 23,000 in 48 countries
- Industrial assets on all continents, a fleet of 17 operational vessels
- 2010 revenue: €6.1 billion



[ Energy is at the core of Technip

# Pazflor Subsea development: Angola



600 km<sup>2</sup> at water depths  
between 600 to 1,200 meters  
(i.e. 6 times the area of Paris)

175 km of flowlines and  
90 km of umbilicals



# Perdido Spar: Gulf of Mexico



Water depth: 2,385 m

Hull: 170 m x 36 m

# Qatar LNG trains (6 x 7.8 Mt)

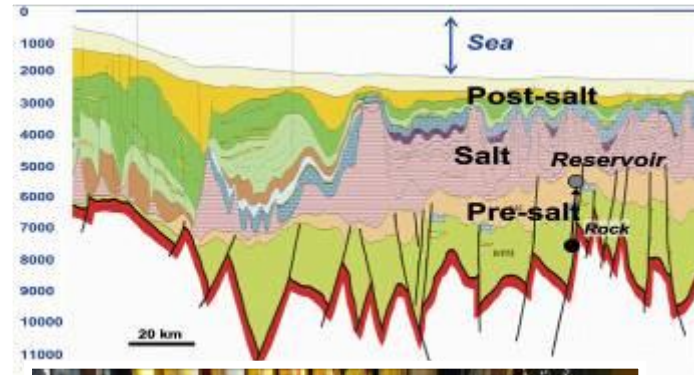
70,000 people at peak of construction





# The new frontier challenges

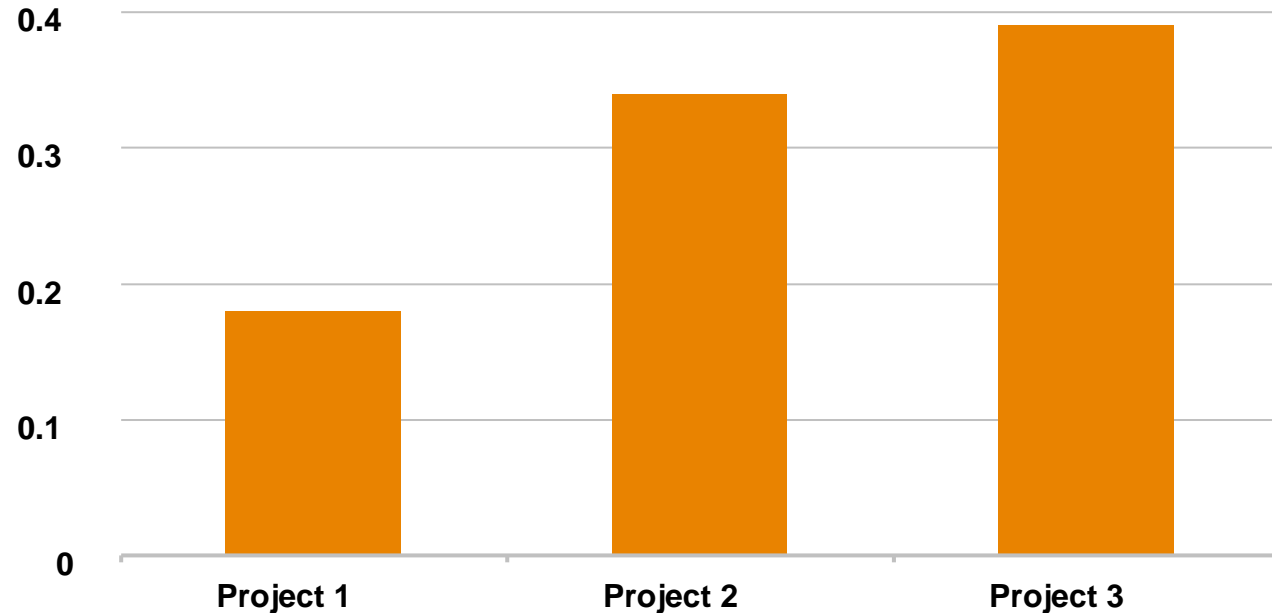
- Ultra-deep water (3,000 m water depth)
- Pre-salt basins
- FLNG (Floating Liquefied Natural Gas)
- Arctic developments
- Mega refineries and petrochemicals complexes (Ex: Jubail)
- Tar sands



# What makes the difference

Same type of onshore project - Same environment – 20,000 people at peak

Total Recordable Case Frequency for 200,000 hours



- 1) Leadership
- 2) Alignment
- 3) Trust in the system(s)

# Let's take safety further, together

- **Industry-wide leading indicators and guidelines**
- **Consistency across the globe**
  - Taking cultural specificities into account
- **Client/contractor/subcontractor joint initiatives**
  - Low probability high impact mindset
  - Ex: Marine Well Containment System
- **Lessons learnt sharing**
  - “Stop the work”
  - Application of “balance of consequences”
- **HSE key element in leaders' careers**





# Thank you

